



- Windows 10, Windows 7 (32 or 64 bit)
- Scanner and PC communicate via USB ports
- User definable pixel depth (8,10,12 or 14 bits)
- Dust & scratch removal module using IR

AutoScanner Key Features

- Roll film or individual frame scanning
- Automatic fiducial or image edge detection
- Real time tonal correction for best image quality
- Pressure plate & film lifted during film transport
- Motorized spools for automated film advancement
- Project management with multiple setups/jobs
- Auto-rewind of film when scan session complete
- File name count up or down; template
- Consistent high geometric accuracy; no resampling
- 14 bit radiometric resolution
- High optical resolution of 8 µms
- Real time scan resolutions 8, 12, 16, 20...128
- Best scan parameters automatically set by system
- Project management with multiple setups/jobs
- Cool LED illumination system
- Unsurpassed dynamic range of 3.4D

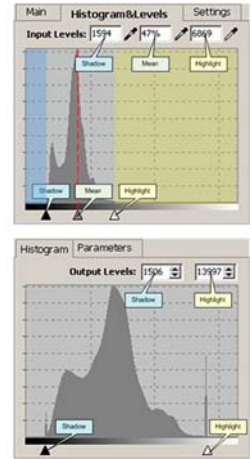
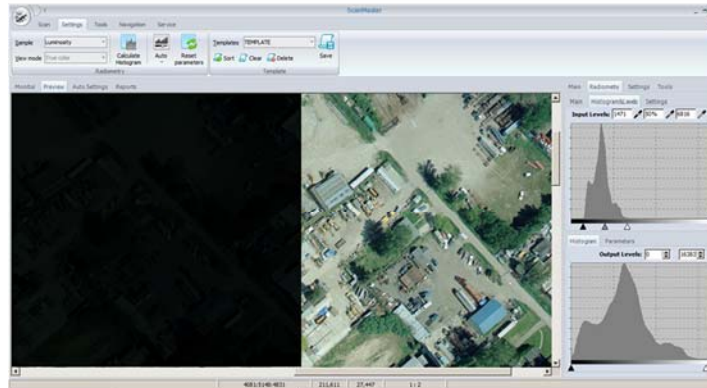


SIMPLE USER INTERFACE
Single Window & Multiple Tabs
Predefined Templates For Easy Management



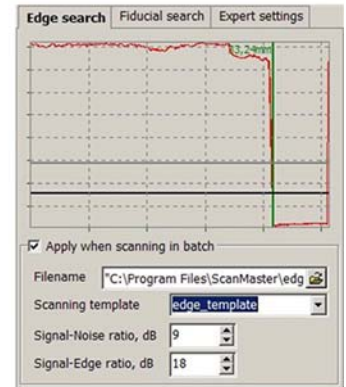
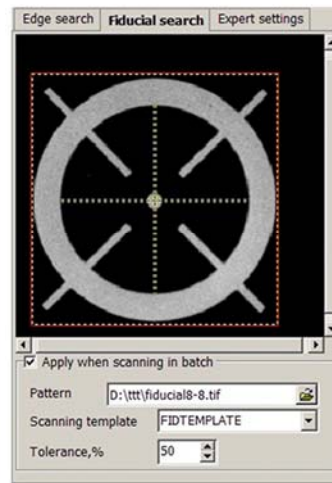
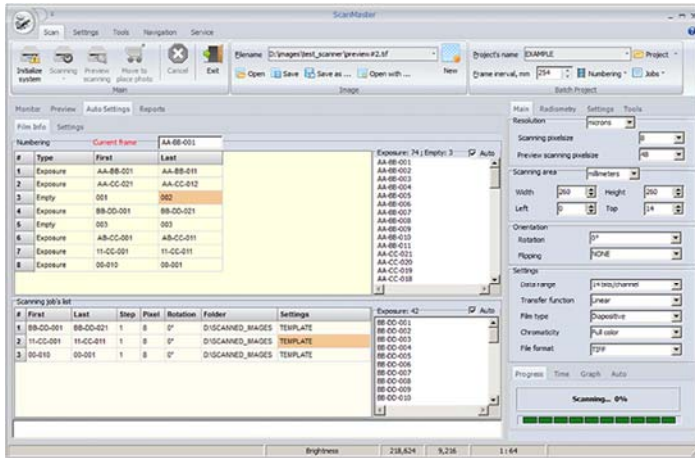
SCANNING SETUPS

Automatic Adjustment Tools e.g. AutoLevel or AutoColors
Preview For Histogram Adjustments
Input / Output Level Analysis



AUTOMATIC SCANNING FEATURES

Wizards walk the operator step-by-step
Find Next Frame via Find Fiducial
Find Next Frame via Find Image Edge or Multiple Image Edges



Black & White (233x233 mm)		True Color (233x233 mm)	
Pixel Size	Scanning Time	Pixel Size	Scanning Time
8	8 min	8	14 min
12	6 min	12	10 min
16	5 min	16	8 min
20	4 min	20	7 min

1 - TYPICAL SCAN TIMES - REGARDLESS OF PIXEL DEPTH



<i>Technical Data</i>	
Resolution	8µms optical (3175 ppi); 4, 8, 12,16...128µms-real time by binning Other sizes by post process
Media	Roll Film (manual/automatic); Individual Frame Positive or Negative; B/W or Color transparency
Geometric Accuracy	±3µms RMSE <i>without resampling image data</i>
Geometric Precision	1µm resolution
Radiometry	14 bits/channel
Optical Density	0.001 to 3.7D
Dynamic Range	3.4D
Illumination	Computer controlled LED - 30000 hours
Sensor	Tri-linear CCD, Sony 5300; Fully compensated
Scanning Range	Upto 320 wide file, Upto 168 roll diameter; Cut Sheet 470x320
Image Format	Tiled TIFF, Strip TIFF, TIFF 6.0 JPEG, JPEG2000 Output 8/10/12/14 bits (ScanMaster FULL)
Operating System	Windows 10™, Windows 7™ (32 or 64 bit)
Dimensions	1.60x0.90x1.10 M
Weight	295 Kg.

