



## Your Scanner is NOT Dead

### Film Archival or Image Acquisition Lives

Get more scans per hour and reduce the cost per scan. Scanning for archival purposes is a reality and profitable. With the ScanMaster Upgrade your scanner will be brought up to present day technology standards.

### All Communications Via USB Ports



### New User Interface

- Single Window & multi tabs
- Templates managing scan session



## Get More Out of Your Scanner



Bring new life to your RasterMaster scanner with the ScanMaster Upgrade.

Cut scan times in half with better image quality.

Remove proprietary electronics boards that are outdated.

All communication between the scanner and PC via USB ports.

Use a new modern interface that is more intuitive with more imaging functions.

Save money by installing the upgrade yourself using step-by-step instruction movies, pdf files and remote session access to our engineers.

Collect image data at 8, 10, 12 or 14 bit pixel depth thereby persevering more pixel image information.

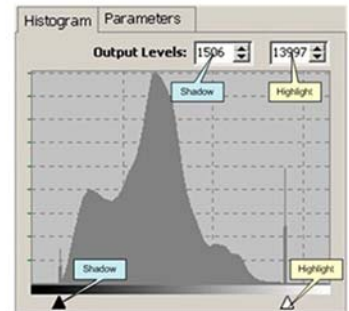
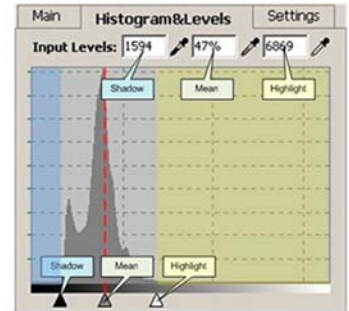
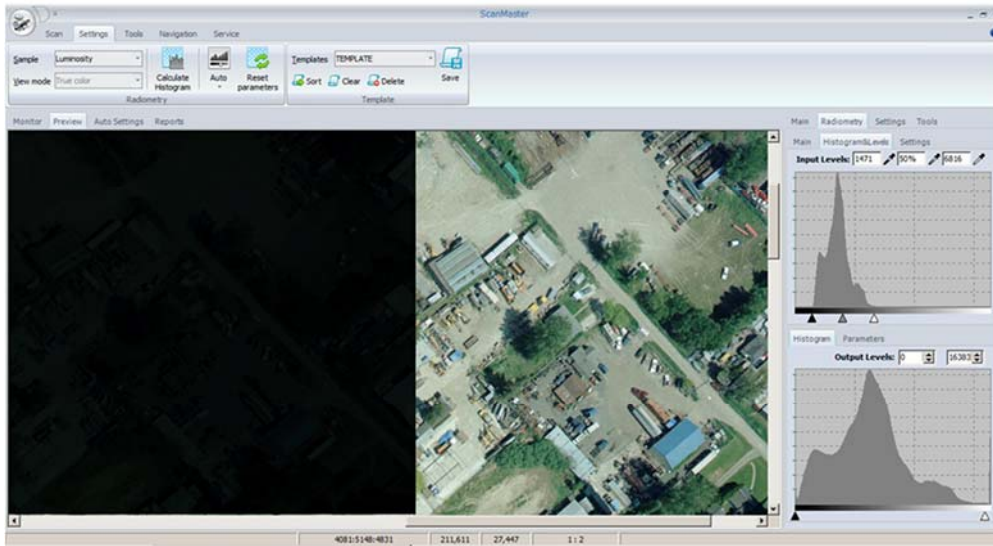
Operates with W7 (32 or 64 bit) or Windows 10.

New image editor included allowing for multi-image processing.



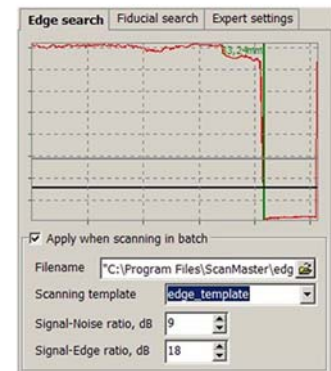
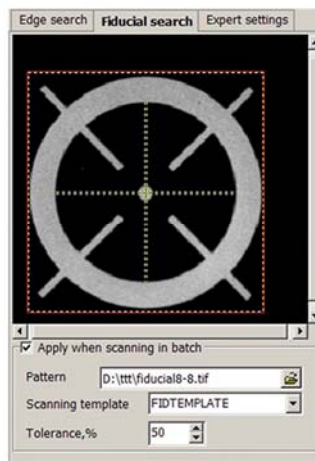
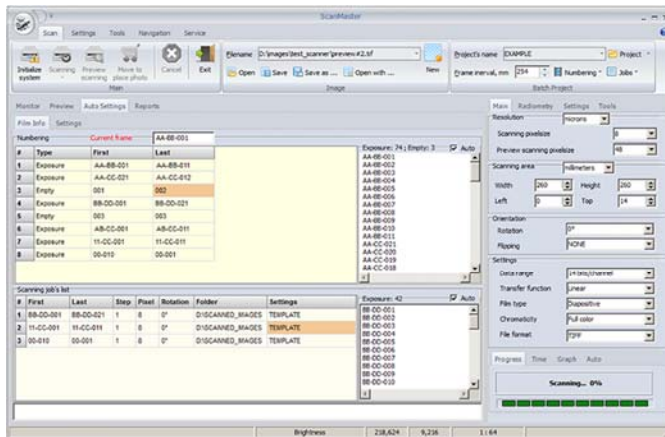
## EASY SCANNING SETUPS

- Automatic adjustment processing tools such as AutoLevels and AutoColors
- Preview for adjustment of radiometric parameters – maximize histograms
- Input / Output levels analysis for image correction



## Automatic Scanning Features

- Wizards walk the operator step-by-step
- Find Next Frame via Find Fiducial or Find Image Edge (multiple)
- Easy and complete multiframe scanning session setup





<i>Technical Data</i>	
Resolution	8µms optical (3175 ppi); 4, 8, 12,16...128µms-real time by binning Other sizes by post process
Media	Roll Film (manual/automatic); Individual Frame Positive or Negative; B/W or Color transparency
Geometric Accuracy	±2µms RMSE <i>without resampling image data</i>
Geometric Precision	1µm resolution
Radiometry	14 bits/channel
Optical Density	0.001 to 3.7D
Dynamic Range	3.4D
Illumination	Computer controlled LED - 30000 hours
Sensor	Tri-linear CCD, Sony 5300; Fully compensated
Scanning Range	Roll Unit 260x240mm; Cut Sheet 260x260 (RM3A 300x300)
Image Format	Tiled TIFF, Strip TIFF, TIFF 6.0 JPEG, JPEG2000 Output 8/10/12/14 bits (ScanMaster FULL)
Operating System	Windows 7™ (32 or 64 bit), Windows 10™
Dimensions	0.83x1.10x1.00 M
Weight	165 Kg.

\*\* TYPICAL SCAN TIMES – REGARDLESS OF PIXEL DEPTH

Black & White (233x233 mm)		True Color (233x233 mm)	
Pixel Size	Scanning Time	Pixel Size	Scanning Time
8	8 min	8	14 min
12	6 min	12	10 min
16	5 min	16	8 min
20	4 min	20	7 min



2-Servo Upgrade Interface Box



1-Video Interface Box